

Writing Major Scales Using Whole and Half Steps

ANSWER KEY

Using the pattern **WWHWWWH** (W = Whole Step, H = Half Step), build all the major scales. Some scales (like A major) could be in either octave. Take your pick! Remember to go from note name to note name, not skipping any of them (i.e., *don't do this*: C D F \flat F G A B C :) Accidentals go directly to the left of each notehead. Finally, pay attention to which clef you're in. Enjoy building those scale muscles!

C major (example)



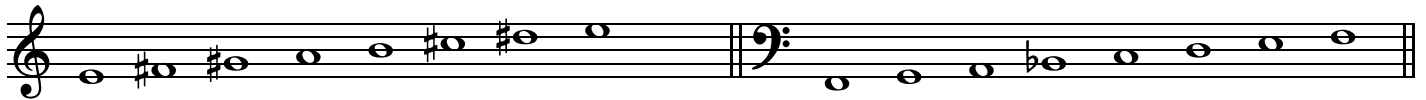
A \flat major

D major



B \flat major

E major



F major

B major



G \flat major

C \flat major



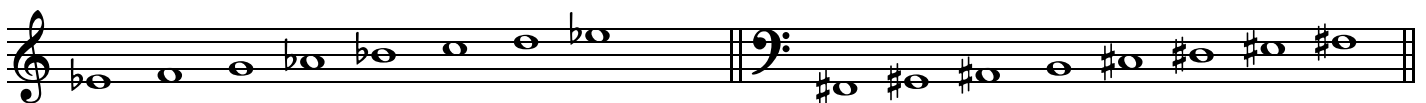
C \sharp major

A major



D \flat major

E \flat major



F \sharp major

G major

